

This site uses cookies and related technologies, as described in our [privacy policy](#), for purposes that may include site operation, analytics, enhanced user experience, or advertising. You may choose to consent to our use of these technologies, or [manage your own preferences](#).

Decline

Accept

# 2014 50 AVENUE SW

Calgary, Alberta

<b>BEDROOMS</b>	<b>BATHROOMS</b>	<b>AREA</b>	<b>REFERENCE NUMBER</b>	<b>YEAR BUILT</b>
4	4	1,861FT <sup>2</sup>	A1130484	2014

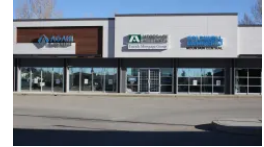
**PRICE:** CAD 799,000

## SUMMARY

Sought after Altadore community. This gorgeous home , includes many features, including aggregate patio and walk ways. The main floor has 7 ¼ plank engineered hardwood...

## AMENITIES

- Stucco
- Dishwasher
- Microwave
- Washer
- Full (Finished)
- Fence
- Ceramic Tile
- Playground
- Dryer
- Oven - Built-In
- Playground
- Semi-detached
- Yes
- undefined
- Cooktop - Gas
- Hood Fan
- Refrigerator
- Finished
- Stone
- Carpeted



### COLDWELL BANKER MOUNTAIN CENTRAL

4620 Macleod Trail South  
Calgary, Alberta

+1 403-775-6950

[infomc@coldwellbanker.ca](mailto:infomc@coldwellbanker.ca)



