

This site uses cookies and related technologies, as described in our [privacy policy](#), for purposes that may include site operation, analytics, enhanced user experience, or advertising. You may choose to consent to our use of these technologies, or [manage your own preferences](#).

[Decline](#)

[Accept](#)

10 MARTHA'S MEADOW BAY NE

Calgary, Alberta

BEDROOMS	BATHROOMS	AREA	REFERENCE NUMBER	YEAR BUILT
4	4	1,445FT ²	A1124430	2000

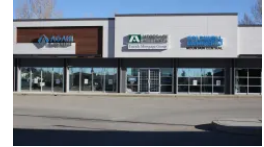
PRICE: CAD 429,000

SUMMARY

2 Storey home located on a large lot on a quiet cul-de-sac in GREAT location in NE Martindale. Fully FINISHED BASEMENT WITH AN ILLEGAL SUITE WITH - SEPERATE SIDE ENTRY...

AMENITIES

- Balcony/deck
- Dishwasher
- Microwave
- Washer & Dryer
- Playground
- Separate entrance
- Detached
- Park
- Garburator
- Refrigerator
- Window Coverings
- Finished
- Suite
- Fence
- Playground
- Hood Fan
- Stove
- Park
- Full (Finished)
- Wood frame
- Carpeted



COLDWELL BANKER MOUNTAIN CENTRAL

4620 Macleod Trail South
Calgary, Alberta

+1 403-775-6950

infomc@coldwellbanker.ca

