

Estevan, Saskatchewan



LOT

3,089FT<sup>2</sup>



REFERENCE NUMBER

SK833467

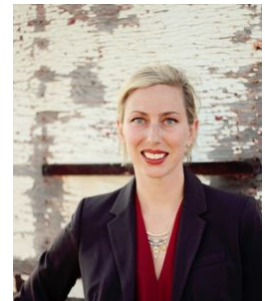
**PRICE:** CAD 17,500

## SUMMARY

The newly appointed SkyView Pointe subdivision is committed to being a wonderful and affordable place to call home. Beautification projects are in the works, roads in the community are now reclaimed asphalt, and groundwork for drainage has been completed. Extremely affordable maintenance fees include water, sewer, garbage, and snow removal. Mobile home units require condominium board approval in order to maintain a higher standard of living for the community. Take a drive today and check out which lot you'd love to make your home! Service hookup fee of \$3000 is approximate and dependant on lot size and mobile unit placement. (id:8860)

## AMENITIES

- Snow
- Cul-de-sac



**AMANDA MACK**

Coldwell Banker Choice Real Estate

Sales Representative

1210 4th Street - Estevan, Saskatchewan

amanda@cbchoice.ca

<https://www.coldwellbanker.ca/agent/amanda-mack-s4a0w9/>

Languages I speak: English



